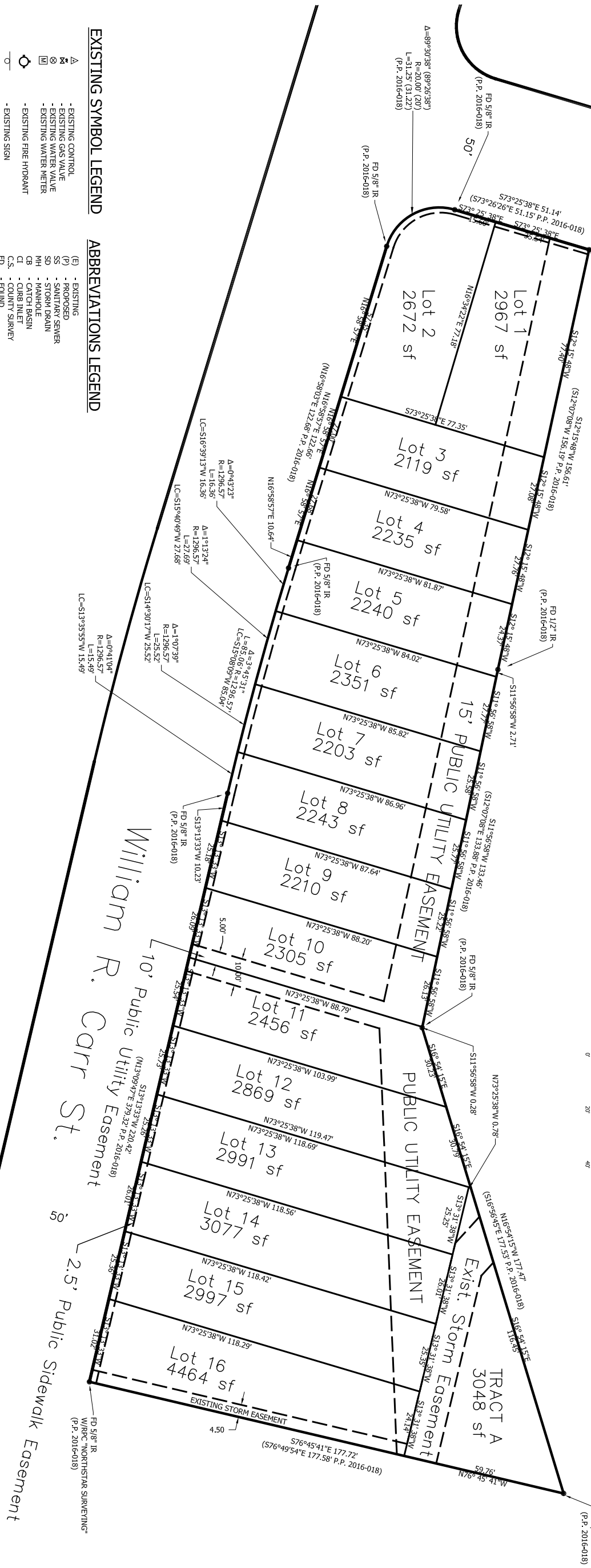


Laurel Dr.



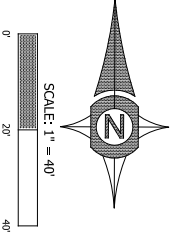
- EXISTING SYMBOL LEGEND**
- △ - EXISTING CONTROL
 - ⊗ - EXISTING GAS VALVE
 - ⊗ - EXISTING WATER VALVE
 - ⊗ - EXISTING WATER METER
 - ⊗ - EXISTING FIRE HYDRANT
 - ⊗ - EXISTING SIGN
 - ⊗ - EXISTING SEWER MANHOLE
 - ⊗ - EXISTING STORM MANHOLE
 - ⊗ - EXISTING STORM CURB INLET
 - ⊗ - EXISTING CONCRETE SURFACE
 - - FOUND MONUMENT AS NOTED
 - - EXISTING 6" WOOD FENCE
 - - EXISTING 4" CYCLONE FENCE
 - - EXISTING SD LINE LOCATE
 - - EXISTING SS LINE LOCATE
 - - EXISTING WATER LINE LOCATE
- ABBREVIATIONS LEGEND**
- (E) - EXISTING
 - (P) - PROPOSED
 - SS - SANITARY SEWER
 - SD - STORM DRAIN
 - MH - MANHOLE
 - CB - CATCH BASIN
 - CI - CURB INLET
 - FD - FOUND
 - IR - IRON ROD
 - FR - FINISH FLOOR
 - FF - FINE FINISH
 - FB - FLOW LINE
 - PL - PUBLIC UTILITY EASEMENT
 - TE - TIE
 - TR - TRIBUT ELEVATION (FLOW LINE)
 - R - RADIUS
 - R.O.W. - RIGHT-OF-WAY
 - TC - TOP FACE OF CURB
 - TOP - TOP OF PIPE
 - P.L. - PARTITION PLAT
 - W/ - WITH
 - OPC - ORANGE PLASTIC CAP
 - YPC - YELLOW PLASTIC CAP
 - RPC - RED PLASTIC CAP

PROJECT VERTICAL DATUM -- NAVD 88

ALL ELEVATIONS ARE SHOWN ON THE VERTICAL DATUM OF NAVD 88. THE VERTICAL BENCHMARK USED FOR ESTABLISHING ELEVATIONS WAS A GPS STATIC OBSERVATION POST-PROCESSED USING OPUS.

ATTENTION: OREGON LAW REQUIRES YOU TO FOLLOW RULES ADOPTED BY THE OREGON UTILITY NOTIFICATION CENTER. THOSE RULES ARE SET FORTH IN OAR 592-401-0010 THROUGH OAR 592-401-0030. YOU MAY OBTAIN COPIES OF THE RULES BY CALLING THE CENTER. (NOTE: THE TELEPHONE NUMBER FOR THE OREGON UTILITY NOTIFICATION CENTER IS (503) 232-1587.)

THE LOCATION AND DESCRIPTIONS OF EXISTING UTILITIES SHOWN ON THE DRAWINGS ARE COMPILED FROM AVAILABLE RECORDS AND/OR FIELD SURVEYS. THE ENGINEER OR UTILITY COMPANIES DO NOT GUARANTEE THE ACCURACY FOR THE COMPLETENESS OF SUCH RECORDS. CONTRACTOR SHALL FIELD VERIFY LOCATIONS OF ALL EXISTING UTILITIES PRIOR TO CONSTRUCTION.



PLAN REVISIONS	DATE
REVISED PER CONCEPTUAL REVIEW	01-08-18

Sheet
of
2
5

SCALE: SEE BASESCALE

REGISTERED
**PROFESSIONAL
LAND SURVEYOR**
PRELIMINARY

EDMUND A. PATTON
JULY 11, 2000
46805

RENEWAL DATE: 12/31/18

DATE:
12/15/2017

PROJECT:
17-181 DONNE ADAIR
VILLAGE SUBDIVISION

DRAWN BY:

EIP

CHECKED BY:

TENTATIVE SUBDIVISION PLAT
**WILLIAM R. CARR
SUBDIVISION
ADAIR VILLAGE
OREGON, 97330**

**UDELL ENGINEERING
AND
LAND SURVEYING, LLC**

63 EAST ASH ST.
LEBANON, OREGON 97335
(541) 451-5125 PH.
(541) 451-1366 FAX

CLIENT:

BRIAN DONNE
6079 NW MOUNTAINVIEW DR
CORVALLIS, OREGON 97330
(541) 757-0899

